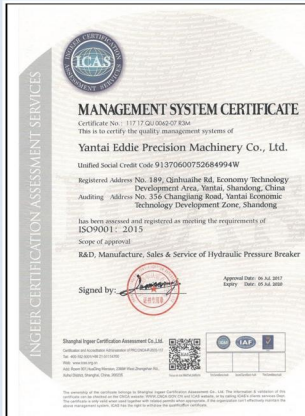


EDT SERIES HYDRAULIC BREAKER



ISO9001 . ISO14001 . BS0HSAS18001

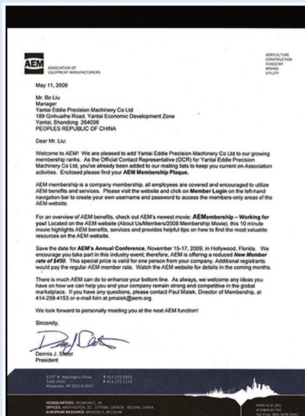
Professional manufacturer Professional choice



ISO9001:2015

Occupational Health and Safety Management System Certificate(OHSMS)

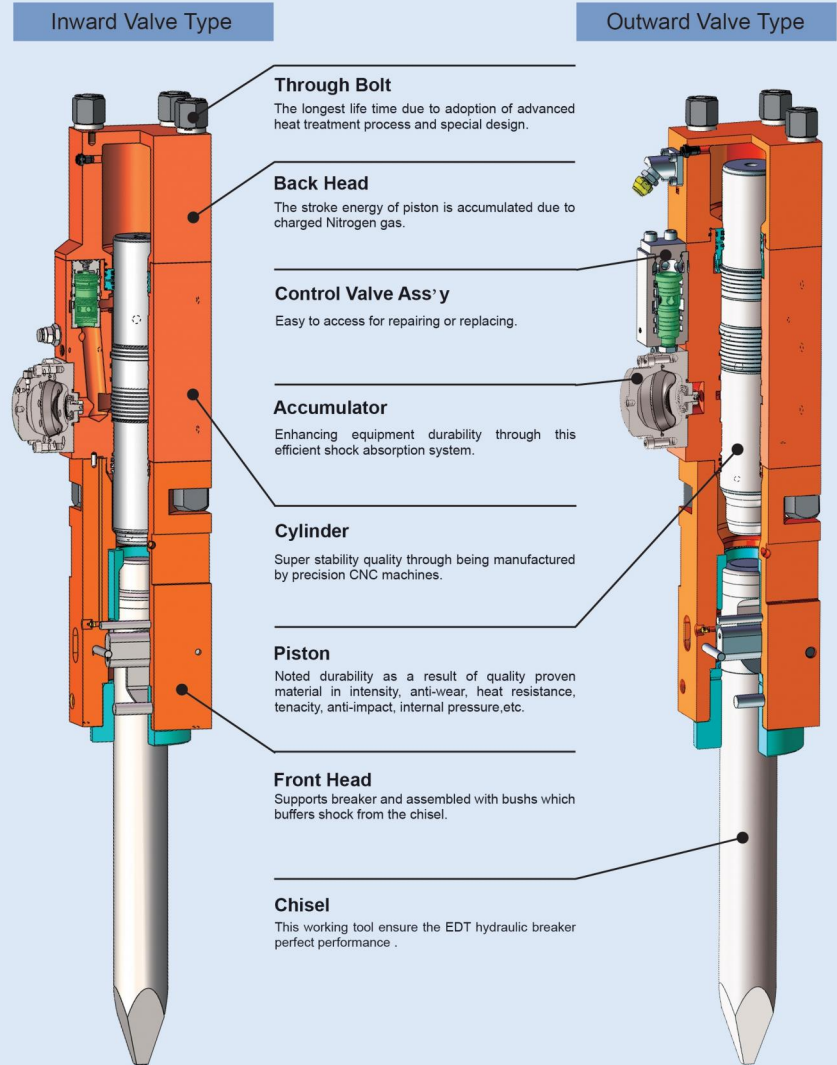
Environmental Management System Certificate (EMS)



AEM

CE

Noise Control



EDT SERIES HYDRAULIC BREAKER

Medium-duty Hydraulic Breakers

- Strict quality control
- Optimized design
- Professional manufacturing process



ISO9001 . ISO14001 . BSOSHAS18001

Professional manufacturer Professional choice



Top Type



Side Type



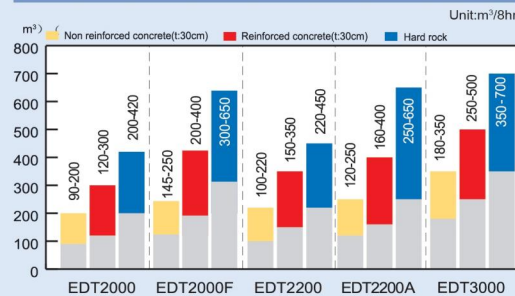
Box-Silenced Type



SPECIFICATION

Spec.	Unit	EDT2000	EDT2000F	EDT2200	EDT2200A	EDT3000
Body weight	kg	850	846	920	956	1092
Total weight	kg	1653/1847/1893	1680/1880/1930	1774/2059/2011	1809/2094/2011	2218/2380/2457
Outline dimension (L×W×H)	Side	2423*575*1202	2427*575*1202	2480*575*1335	2480*575*1335	2640*665*1343
	Top	2900*575*710	2656*575*710	2866*575*710	2866*575*710	2897*665*760
	Box	2847*575*710	2646*575*710	2793*575*710	2793*575*710	3002*665*760
Operating pressure	kg/cm ²	160-180	160-180	160-180	160-180	160-180
Oil flow range	l/min	130-150	145-180	120-180	120-180	150-190
Diameter of hose	inch	1	1	1	1	1
Diameter of tool	mm	135	135	140	140	150
Impact frequency	bpm	400-800	360-460	350-500	350-500	350-700
Suitable carrier	ton	18-26	18-26	18-26	18-26	27-35

Breaker Capacity



APPLICABLE EXCAVATOR

Model	CAT	KOMATSU	DOOSAN DAEWOO	HYUNDAI	HITACHI	KOBELCO	VOLVO	KATO	SANY	LIUGONG	STRONG	LINGONG	FOTON	XGMA	SUNWARD	ZOOMLION	XCMG	JONYANG	SUMITOMO
EDT2000	E200B 320C 322	PC200 PC220 PW210	DH220 DH225	RB200 RB210 R215	ZX200 ZX210 ZX270	SK200 SK200E SK220E SK230E	EC210	HD700 HD800 HD820	SY185C-8 SY195C-9 SY205C-9 SY215C-9 SY225C-9 SY235C-9	CLG200 CLG920	JCM924D JCM921D GC228LC-8 GC208-8 GC258LC-8	LG6210E LG6225E LG6250E	220	210LC-8 230LC-7B	SWE230	ZE205E ZE210E ZE230E ZE260E	210 220	JY210E JY230 JY621E JY623E	SH200 S260
EDT2000F	E200B 320C 322	PC200 PC220 PW210	DH220 DH225	RB200 RB210 R215	ZX200 ZX210 ZX270	SK200 SK200E SK210E SK230E	EC210	HD700 HD800 HD820	SY185C-8 SY195C-9 SY205C-9 SY215C-9 SY225C-9 SY235C-9	CLG200 CLG920	JCM924D GC208-8 JCM921D GC228LC-8 JCM922D GC258LC-8	LG6210E LG6225E LG6250E	220	210LC-8 230LC-7B	SWE230	ZE205E ZE210E ZE230E ZE260E	210 220	JY210 JY230 JY621E JY623E	SH200 S260
EDT2200	219 320 322 325 320C	PC200 PC220	DH220 DH225 DH258	R220 R205-7 R225	ZX210 ZX220 ZX230 ZX240 ZX270	SK220 SK230 SK250	EC210 EC240	HD820-5 HD880 HD1023	SY185C-8 SY195C-9 SY205C-9 SY215C-9 SY225C-9 SY235C-9	CLG210 CLG230 CLG920 CLG923 CLG925	JCM924D GC208-8 JCM921D GC228LC-8 JCM922D GC258LC-8	LG6210E LG6225E LG6250E	230 240 260	230LC-7B 240LC-8	SWE230	ZE205E ZE210E ZE230E ZE260E	220 240 250	JY210E JY230 JY621E JY623E	SH200 SH240 S260
EDT2200A	219 320 322 325 320C	PC200 PC220	DH220 DH225 DH258	R220 R205-7 R225	ZX210 ZX220 ZX230 ZX240 ZX270	SK220 SK230 SK250	EC210 EC240	HD820-5 HD880 HD1023	SY185C-8 SY195C-9 SY205C-9 SY215C-9 SY225C-9 SY235C-9	CLG210 CLG230 CLG920 CLG923 CLG925	JCM924D GC208-8 JCM921D GC228LC-8 JCM922D GC258LC-8	LG6210E LG6225E LG6250E	230 240 260	230LC-7B 240LC-8	SWE230	ZE205E ZE210E ZE230E ZE260E	220 240 250	JY210E JY230 JY621E JY623E	SH200 SH240 S260
EDT3000	325 330	PC250 PC270 PC300	DH300	R260 R290	ZX280 ZX300	SK270 SK300 SK320 SK300E	EC290	HD1023 HD1100 HD1200	SY285C-9 SY305C-9H SY335C-9 SY335C-9H SY365C-8	JCM933D GC338LC-8 JCM927D	LG6300E			SWE330	ZE330E	330	JY630 JY630E	S90 SH300 SH330	

EDT SERIES HYDRAULIC BREAKER

Heavy-duty Hydraulic Breakers

- Powerful strike
- Easy maintenance
- Excellent environmental protection



ISO9001 . ISO14001 . BSOHSAS18001

Professional manufacturer Professional choice



Top Type



Side Type

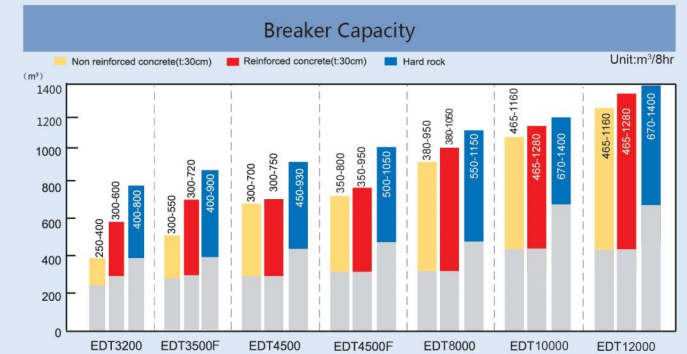


Box-Silenced Type



SPECIFICATION

Spec.	Unit	EDT3200	EDT3500F	EDT4500	EDT6000F	EDT8000	EDT10000	EDT12000
Body weight	kg	1313	1590	1960	2430	2663	3550	6200
Total weight	kg	2577/2754/2968	3277/3447/2975	3905/4057/3902	4365/4844	4841/5374	6814/7225	11000
Outline dimension (L×W×H)	Side	2776*665*1382	2820*665*1445	3184*764*1670	3326*764*1567	3420*764*1635	3660*864*1945	
	Top	3102*665*760	3446*665*840	3812*764*920	3945*790*930	4020*800*930	4288*864*1013	
	Box	3075*665*760	3460*665*840	3723*764*920				4800*1100*1160
Operating pressure	kg/cm ²	160-180	170-200	180-210	200-240	200-240	200-240	200-240
Oil flow range	l/min	180-240	200-250	210-290	220-270	220-290	290-350	450-550
Diameter of hose	inch	1-1/4	1-1/4	1-1/4	1-1/4	1-1/4	1-1/4	1-1/2
Diameter of tool	mm	155	165	175	185	195	210	248
Impact frequency	bpm	300-450	250-380	200-350	200-250	180-200	150-200	200-350
Suitable carrier	ton	28-35	30-40	35-40	40-55	45-60	60-80	80-140



APPLICABLE EXCAVATOR

Model	CAT	KOMATSU	DOOSAN DAEWOO	HYUNDAI	HITACHI	KOBELCO	VOLVO	KATO	SANY	LIUGONG	LINGONG	STRONG	FOTON	XGMA	SUNWARD	ZOOMLION	XCMG	JONYANG	SUMITOMO
EDT3200	330 220 225 239 E300	PC250 PC300	DH300	R290 R360 R420	ZX300 ZX330 ZX350	SK300 SK320 SK330 SK350	EC290	HD1023R HD1430R	SY285C-9 SY305C-9H SY335C-9 SY335C-9H SY365C-9	920D 922D 225C 230 723C 925D 925LL	LG6300E	JCM933D GC338LC-8	FR220E	XG825LC	SWE330	ZE330E	330	JY630	S340 S390
EDT3500F	329 335 330L E450 235C	PC400	DH360 DH420 DH500	R420 R450	ZX360 ZX400	SK400 SK430 SK450	EC360 EC460	HD1638R	SY335C-9 SY335C-9H SY365C-8 SY365H-8 SY385H-8 SY385C	936D	LG6360E	GC258LC-8 GC378LC-8 GC338LC-8	FR260	XG833	SWE330	ZE360E	370		S100 S430 SH400 SH450
EDT4500	E450 235C	PC400	DH420 DH500	R420 R450	ZX400	SK430 SK450	EC460	HD1638R	SY465H-8	936D	LG6360E	GC378LC-8	FR330	XG836LC	SWE470	ZE480E	370 390	JY644	SH400 S430
EDT6000F	345 336D 340D 345D	PC450 PC500	DH450 DH500	R450 R455 R485	ZX450 ZX500	SK450	EC480	HD2048R	SY360 SY365	936D 946E	LG6400E	GC458LC-8	FR370		SWE470	ZE480E	390	JY645E	SH480 SH480 SH500
EDT8000	345D 349DL 349D	PC600	S500 DX520	ROBEX500LC R520	EX520 EX550 UH120 EX600	SK460 SK480	EC480	HD2048R	SY420 SY425 SY485 SY700	946E		GC458LC-8 GC498LC-8			SWE470	ZE480E ZE520E	470 490	JY645E	SH460 SH480 SH500
EDT10000	374FL 390FL 390DL 365CL 385CL	PC650LC PC850	DX700LC	R805LC	ZX870LCH ZX870LCH	SK850LC	EC700C EC700B		SY700H SY700C SY850H	LCG970E						ZE700E	XE900C		SH800LHD SH700LHD
EDT12000	390FL	PC1250 PC1600			EX1200													XE900D	

EDT SERIES HYDRAULIC BREAKER

- Backhoe Loader Type
- Skid Steer Loader Type Breaker
- Auto-Grease-Device(AGD)



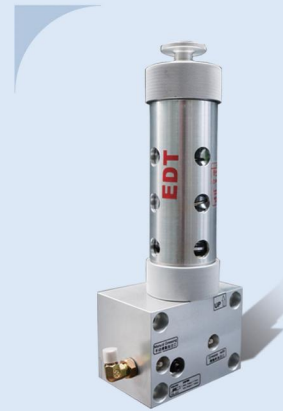
ISO9001 . ISO14001 . BSOHSAS18001

Professional manufacturer Professional choice

Skid Steer Loader (SSL)

The skid steer loader type breakers are specially developed for skid steer loaders to meet the market requirement of higher impact energy and optimal performance.

Such as : Bobcat185, Cat226, Cat216, 226, 262 and other brands and models.



SPECIFICATION	AGD-R400	AGD-R300
Output Pressure	30bar-80bar	20bar-60bar
Cartridge Capacity	400 ml	300 ml
Exterior Size	140mm x 91mm x 362mm	140mm x 91mm x 320mm
Weight Without Grease	5.2 Kg	4.5 Kg
Output Port Size	PF 1/4"	PF 1/4"
Running time For Cartridge (Normal Condition)	20tons excavator 4-6 days 40tons excavator 1-2 days	20tons excavator 3-4 days 40tons excavator 1-2 days
Grease type	MoS2 NLGL NO.2(normal) NLGL NO.1(under 10°C) NLGL NO.0(under 0°C)	MoS2 NLGL NO.2(normal) NLGL NO.1(under 10°C) NLGL NO.0(under 0°C)
Normal Temperature Range	-10°C ~ 50°C	-10°C ~ 60°C
Permissible Temperature Range	-20°C ~ 90°C	-20°C ~ 90°C

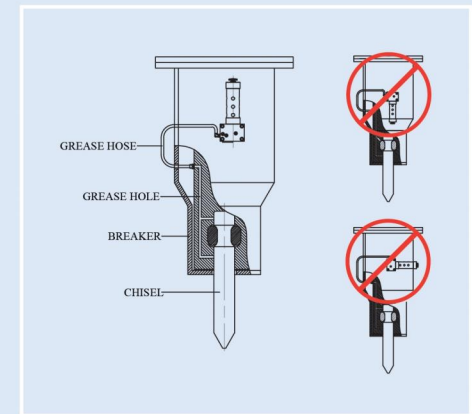
Backhoe Loader

The backhoe loader type breakers are developed for backhoe loader to meet the required design for demolition.

Such as : JCB3cx, 3dx, 4cx
Case580M Cat416D
John Deere 310J, 410J



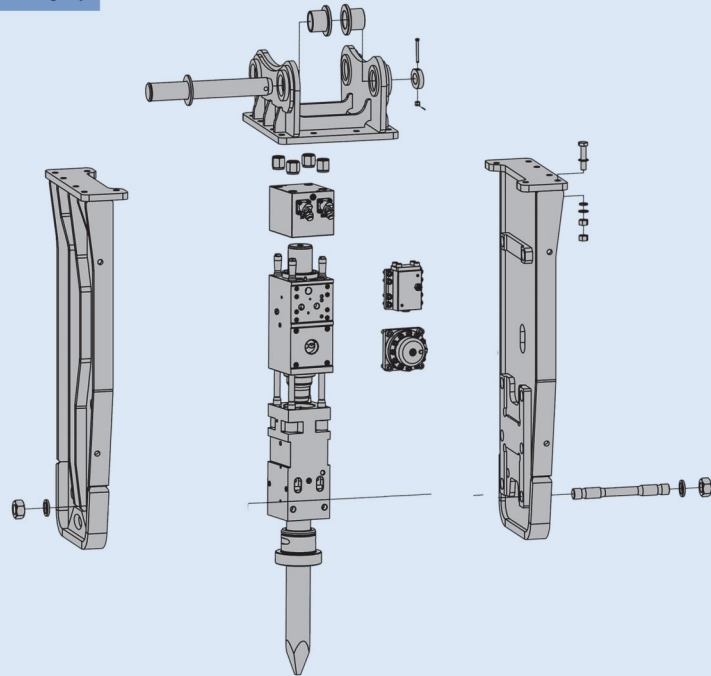
All of these types can fit to Backhoe Loader



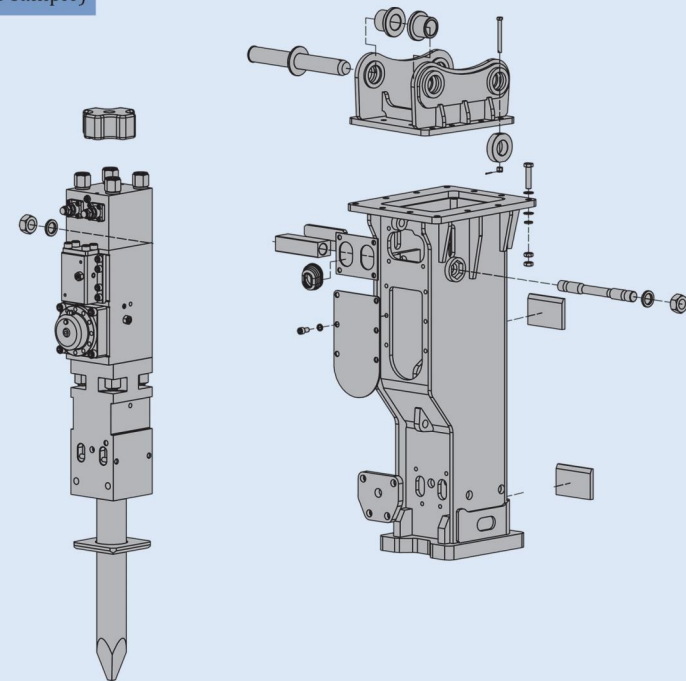
Professional manufacturer Professional choice



(EDT2000 as sample)



(EDT2000F as sample)



EDT SERIES HYDRAULIC BREAKER



ISO9001 . ISO14001 . BS OHSAS18001

Professional manufacturer Professional choice

EDT Piping Kit



Foot valve (Pedal valve)

Stop valve

Solenoid valve

Flange clamp

Hose

Pipe clamp

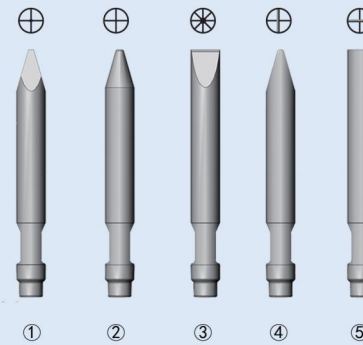
Support Plate

Rubber protection ring

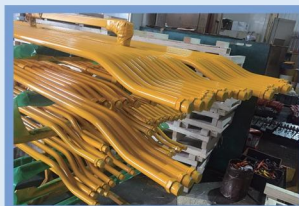
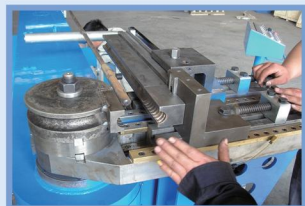
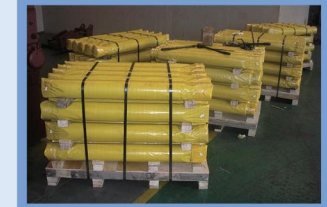
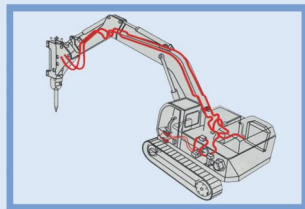
Filter and Accumulator (option)

Hard piping

EDT Chisel



①	MOIL POINT TYPE	M	Multiple Purpose
②	CONICAL TYPE	C	Multiple Purpose
③	H-WEDGE TYPE	H	Trenching, Asphalt, Concrete
④	V-WEDGE TYPE	V	Trenching, Asphalt, Concrete
⑤	BLUNT TYPE	B	Boulders, Concrete



Model	EDT 100	EDT 200	EDT 300	EDT 400	EDT 430	EDT 435	EDT 450	EDT 800	EDT 1600	EDT 2000	EDT 2000F	EDT 2200(A)	EDT 3000	EDT 3200	EDT 3500F	EDT 4500	EDT 6000F	EDT 8000	EDT 10000
Dia. (mm)	40	45	53	68	75	80	85	100	125	135	135	140	150	155	165	175	185	195	210
Length (mm)	430	500	580	702	755	745	745	1130	1130	1200	1200	1300	1300	1500	1500	1600	1700	1760	1800
Weight (Kg)	4	8	9	18	24	26	31	60	102	127.5	124	135	157	206	215	255	280	350	415

Professional manufacturer Professional choice

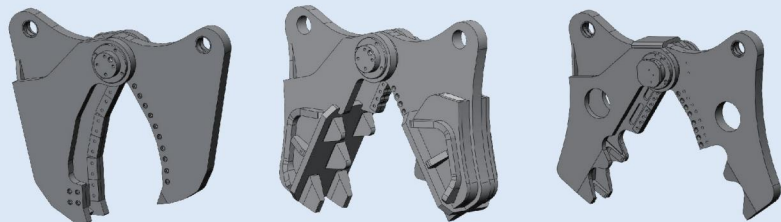
CASTING HYDRAULIC SHEARS 铸造液压剪

Imported motors and high-quality rotary mechanisms are used to improve the life of the rotary device and the stability of the system. The 360° unrestricted free rotary can be used.

采用进口马达和高品质的回转机构，提高了回转装置的使用寿命和系统的稳定性，可360°无限制自由回转。

A variety of different functions of the shears, can be applied to different breaking environment, each function of the shears can be perfect interchange.

多种不同功能的剪口，可适用于不同的破拆作业环境，各功能剪口之间可实现完美互换。



The hydraulic pressure system is installed to speed up the closing speed of the shears and improve the working efficiency of the products.

内设液压增压系统，加快剪口闭合速度，提高产品的工作效率。

The characteristics of large capacity cylinders to ensure high strength shear force.

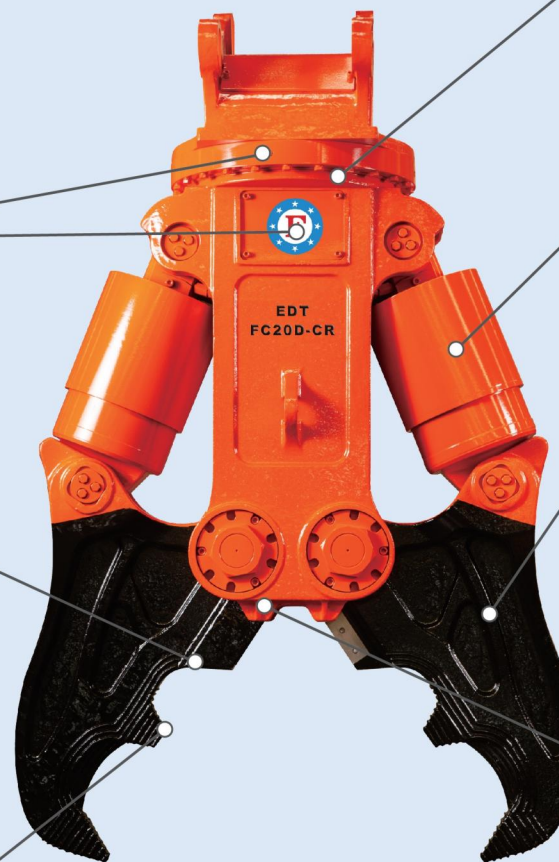
特制大容量油缸，确保高强度剪断力。

Using imported HARDOX wear-resistant steel, with light texture, high strength, strong wear resistance.

采用进口HARDOX耐磨钢材，具有质地轻，强度高，耐磨性强的特点。

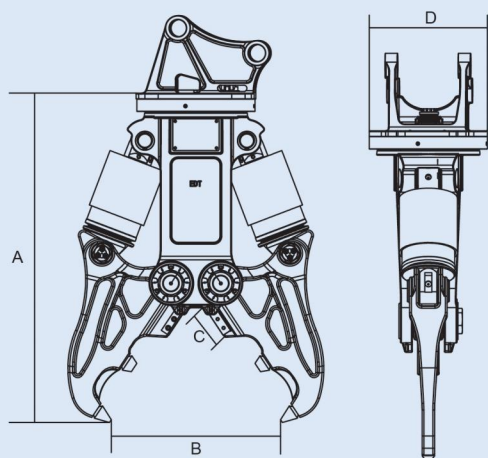
Specially made high strength alloy blades and special fixing methods, which are easy to remove and can ensure cutting strength.

特制高强度合金刀片和特殊的固定方式，即方便拆卸又能保证剪断强度。



Professional manufacturer Professional choice

ALLOY CASTING DEMOLITION CRUSHER CR型合金铸造液压剪



TYPE	FC10D	FC15D	FC20D
A	1227	1800	2043
B	620	950	1100
C	125	185	200
D	486	662	732

FC10D

Opening Width	最大开口	620 mm
Total Weight	重量	650 kg
Crushing Force (end)	破碎力(末端)	385 KN
Cutting Force (minimum)	剪切力(最小)	1100 KN
Closed Working Pressure	闭合工作压力	200-300 Kg/cm ²
Closed Working Flow	闭合工作流量	60-120 lpm
Rotating Way	旋转方式	机械回转, 360°任意角度自由旋转 Mechanical rotary, 360° free rotation
Suitable Carrier	适配挖机	11-16 t

FC15D

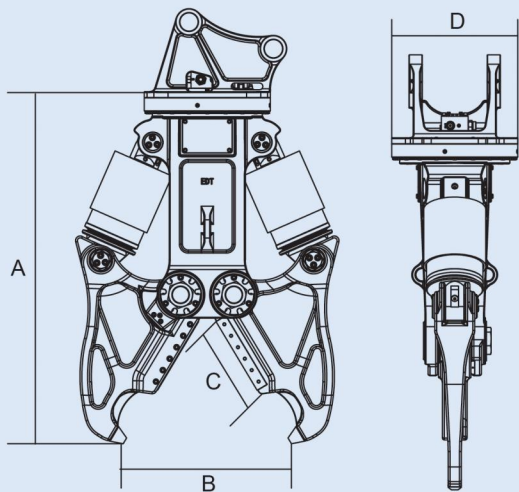
Opening Width	最大开口	950 mm
Total Weight	重量	1800 kg
Crushing Force (end)	破碎力(末端)	685 KN
Cutting Force (minimum)	剪切力(最小)	2000 KN
Closed Working Pressure	闭合工作压力	300-350 Kg/cm ²
Closed Working Flow	闭合工作流量	140-240 lpm
Rotating Way	旋转方式	机械回转, 360°任意角度自由旋转 Mechanical rotary, 360° free rotation
Suitable Carrier	适配挖机	17-25 t

FC20D

Opening Width	最大开口	1100 mm
Total Weight	重量	2570 kg
Crushing Force (end)	破碎力(末端)	1000 KN
Cutting Force (minimum)	剪切力(最小)	3300 KN
Closed Working Pressure	闭合工作压力	300-350 Kg/cm ²
Closed Working Flow	闭合工作流量	180-240 lpm
Rotating Way	旋转方式	机械回转, 360°任意角度自由旋转 Mechanical rotary, 360° free rotation
Suitable Carrier	适配挖机	26-35 t

Professional manufacturer Professional choice

ALLOY CASTING DEMOLITION CRUSHER CC型合金铸造液压剪



TYPE	FC08D	FC15D	FC20D
A	1155	1815	2008
B	550	850	1000
C	240	420	480
D	486	662	732

FC08D

Opening Width	最大开口	550 mm
Total Weight	重量	535 kg
Crushing Force (end)	破碎力(末端)	340 KN
Cutting Force (minimum)	剪切力(最小)	530 KN
Closed Working Pressure	闭合工作压力	200-300 Kg/cm2
Closed Working Flow	闭合工作流量	60-120 lpm
Rotating Way	旋转方式	机械回转, 360°任意角度自由旋转 Mechanical rotary, 360° free rotation
Suitable Carrier	适配挖机	5-10 t

FC15D

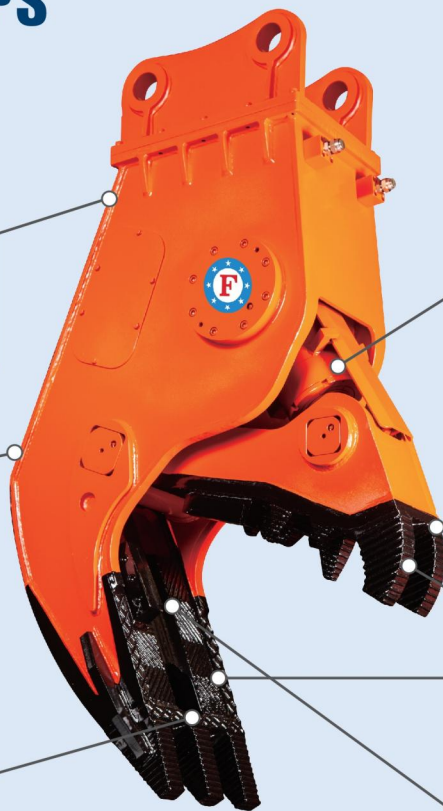
Opening Width	最大开口	850 mm
Total Weight	重量	1895 kg
Crushing Force (end)	破碎力(末端)	900 KN
Cutting Force (minimum)	剪切力(最小)	1400 KN
Closed Working Pressure	闭合工作压力	300-350 Kg/cm2
Closed Working Flow	闭合工作流量	140-240 lpm
Rotating Way	旋转方式	机械回转, 360°任意角度自由旋转 Mechanical rotary, 360° free rotation
Suitable Carrier	适配挖机	17-25 t

FC20D

Opening Width	最大开口	1000 mm
Total Weight	重量	2550 kg
Crushing Force (end)	破碎力(末端)	1050 KN
Cutting Force (minimum)	剪切力(最小)	3000 KN
Closed Working Pressure	闭合工作压力	300-350 Kg/cm2
Closed Working Flow	闭合工作流量	180-240 lpm
Rotating Way	旋转方式	机械回转, 360°任意角度自由旋转 Mechanical rotary, 360° free rotation
Suitable Carrier	适配挖机	26-35 t

Professional manufacturer Professional choice

HYDRAULIC FORCEPS 液压钳



The welding process of special steel plate greatly improves the welding quality of the jaws.

特殊钢板焊接工艺，大大提高了鄂口的焊接质量。

The special flow control system with growth valve not only improves the closing speed of the lower load, but also increases the shear and breaking force of the lower load.

含增速阀块的特殊油路控制系统既提高了低负载下鄂口的闭合速度，又增大了高负载下鄂口的剪切、破碎力。



Ultra high pressure hydraulic cylinder: The cylinder part adopts alloy forging and advanced heat treatment technology, and the compressive strength can reach 60 MPa.

超高压液压油缸：油缸部件采用合金锻打和先进的热处理工艺，耐压强度可以达到60MPa。

Diversified dental plates maximize crushing.

多样化牙盘可实现粉碎最大化。

The movable jaw plate and fixed jaw plate are made of imported HARDOX steel and have light texture, high strength and strong wear resistance.

可动鄂牙盘和固定鄂牙盘采用进口HARDOX钢材制作，质地轻、强度高、耐磨性强。

Jawbone blade can be replaced and reversed at any time with an independent installation design, and special fixed method can be easily removed and cut strength can be guaranteed.

鄂口刀片采用独立安装设计可随时更换反转，特殊固定方式，既方便拆卸又能保证剪断强度。

Professional manufacturer Professional choice

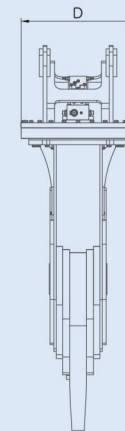
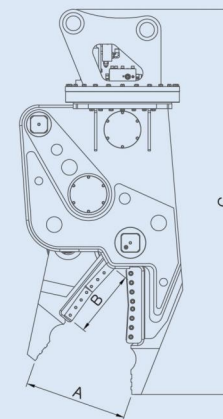
FCP20 DISMANTLED MACHINES FCP20破拆钳



TYPE	FCP20
A	658
B	430
C	2472
D	732

FCP20

Opening Width	最大开口	660 mm
Total Weight	重量	2000 kg
Cutting Force	剪切力	1950 KN
Closed Working Pressure	闭合作业压力	300-350 Kg/cm ²
Closed Working Flow	闭合作业流量	180-240 lpm
Rotation Working Pressure	旋转工作压力	120-160 kg/cm ²
Rotation Working Flow	旋转工作流量	40-60 lpm
Rotating Way	旋转方式	机械回转, 360°任意角度自由旋转 Mechanical rotary, 360° free rotation
Suitable Carrier	适配挖机	20-30 t



Professional manufacturer Professional choice

DISMANTLED MACHINES 破拆钳

The special oil circuit control system with growth valve not only improves the closing speed of lower load lower jaw, but also increases the shear and breaking force of higher load lower jaw.

含增速阀块的特殊油路控制系统既提高了低负载下颚口的闭口速度，又增大了高负载下颚口的剪切、破碎力。

Use of imported HARDOX wear-resistant steel, light texture, high strength, strong wear resistance.

采用进口HARDOX耐磨钢材，质地轻、强度高、耐磨性强。

Concave-convex structure of the teeth can effectively clamp the disassembly, widely used in automotive and large hydraulic container demolition and decomposition.

凹凸构造的牙齿可有效夹住拆卸物，广泛应用于汽车及大型液压容器的破拆分解。



The use of imported motors and high-quality rotary mechanisms improves the life of the rotary device and the stability of the system, and can be used for 360° unrestricted free rotation.

采用进口马达和高品质的回转机构，提高了回转装置的使用寿命和系统的稳定性，可360°无限制自由回转。

Large cylinder design, strong shear force.

超大油缸设计，剪切力强。

The characteristic high strength alloy blade adopts special fixing method, which is easy to remove and can ensure cutting strength.

特质高强度合金刀片采用特殊固定方式，既方便拆卸又能保证剪断强度。

Professional manufacturer Professional choice

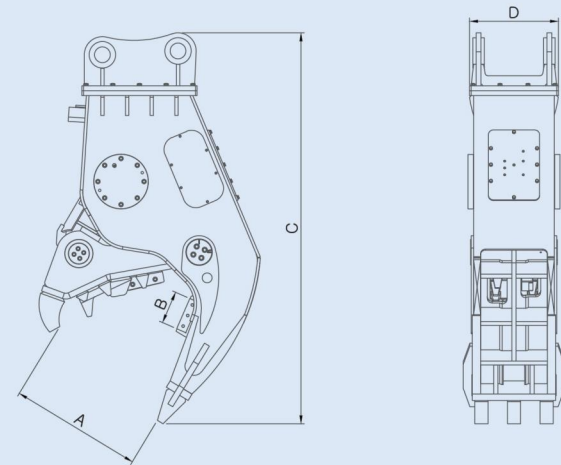
FP20 HYDRAULIC FORCEPS

FP20液压钳



TYPE	FP20
A	802
B	200
C	2372
D	540

FP20		
Opening Width	最大开口	830 mm
Total Weight	重量	1965 kg
Cutting Force (average)	剪切力 (平均)	1600 KN
Smash force (end)	粉碎力 (末端)	650 KN
Closed Working Pressure	闭合作业压力	300-350Kg/cm2
Closed Working Flow	闭合作业流量	180-240 lpm
Rotating Way	旋转方式	固定式
Suitable Carrier	适配挖机	20-30t



Professional manufacturer Professional choice

STONE (WOOD) GRAPPLE 抓石(木)器

Imported motors and high-quality rotary mechanisms are used to improve the life of the rotary device and the stability of the system. The 360° unrestricted free rotary can be used.

采用进口马达和高品质的回转机构，提高了回转装置的使用寿命和系统的稳定性，可360°无限制自由回转。

A variety of different functions of the shears, can be applied to different breaking environment.

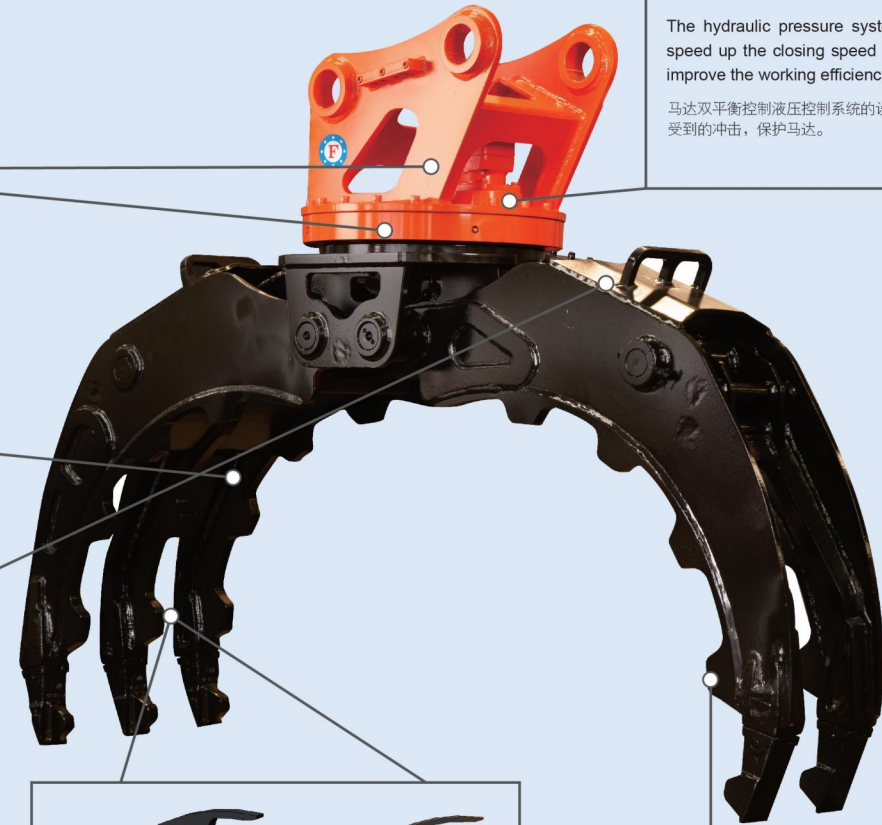
多种不同功能的抓齿，可适用于不同的抓取作业环境。

The characteristics of large capacity cylinders to ensure high strength shear force.

带液压平衡系统的油缸设计，保证抓取的可靠性。

The hydraulic pressure system is installed to speed up the closing speed of the shears and improve the working efficiency of the products.

马达双平衡控制液压控制系统的设计，减少马达的所受到的冲击，保护马达。



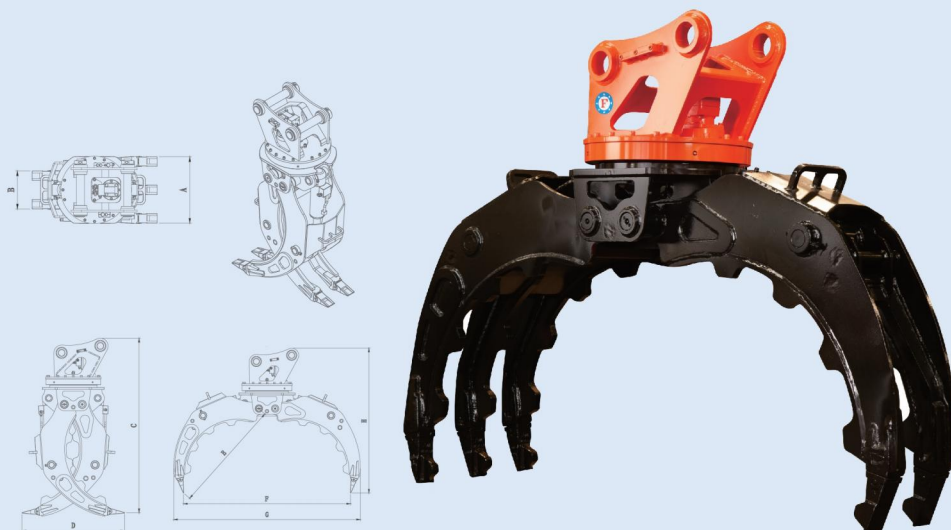
Using imported HARDOX wear-resistant steel, with light texture, high strength, strong wear resistance.

采用进口HARDOX耐磨钢材，具有质地轻，强度高，耐磨性强的特点。

Professional manufacturer Professional choice

STONE (WOOD) GRAPPLE

抓石(木)器



TYPE	A	B	C	D	E	F	G	H
FGW03/FGS03	420	240	1270	680	865	1300	1410	1175
FGW04/FGS04	420	240	1250	695	916	1400	1520	1145
FGW06/FGS06	550	320	1730	735	1115	1800	1950	1525
FGW08/FGS08	660	380	2110	1240	1500	2300	2470	1920
FGW10/FGS10	750	420	2230	1325	1595	2500	2790	2095

FGW(S)03

Opening Width	最大开口	1300 mm
Total Weight	重量	350 kg
Closed Working Pressure	闭合作业压力	110~140 kg/cm ²
Closed Working Flow	闭合作业流量	30~55 lpm
Rotate working pressure	旋转工作压力	60~90 kg/cm ²
Rotate Working Flow	旋转工作流量	30~50 lpm
Unload Weight	卸载重量	1500 kg
Suitable Carrier	适配挖机	4-6 t

FGW(S)04

Opening Width	最大开口	1400 mm
Total Weight	重量	390 kg
Closed Working Pressure	闭合作业压力	120~160 kg/cm ²
Closed Working Flow	闭合作业流量	50~100 lpm
Rotate working pressure	旋转工作压力	60~90 kg/cm ²
Rotate Working Flow	旋转工作流量	30~50 lpm
Unload Weight	卸载重量	2000 kg
Suitable Carrier	适配挖机	7-11 t

FGW(S)06

Opening Width	最大开口	1800 mm
Total Weight	重量	740 kg
Closed Working Pressure	闭合作业压力	150~170 kg/cm ²
Closed Working Flow	闭合作业流量	90~110 lpm
Rotate working pressure	旋转工作压力	140~160 kg/cm ²
Rotate Working Flow	旋转工作流量	30~50 lpm
Unload Weight	卸载重量	3000 kg
Suitable Carrier	适配挖机	12-16 t

FGW(S)08

Opening Width	最大开口	2300 mm
Total Weight	重量	1380 kg
Closed Working Pressure	闭合作业压力	160~180 kg/cm ²
Closed Working Flow	闭合作业流量	100~140 lpm
Rotate working pressure	旋转工作压力	140~160 kg/cm ²
Rotate Working Flow	旋转工作流量	40~60 lpm
Unload Weight	卸载重量	5000 kg
Suitable Carrier	适配挖机	17-24 t

FGW(S)10

Opening Width	最大开口	2500 mm
Total Weight	重量	1700 kg
Closed Working Pressure	闭合作业压力	160~180 kg/cm ²
Closed Working Flow	闭合作业流量	130~170 lpm
Rotate working pressure	旋转工作压力	140~160 kg/cm ²
Rotate Working Flow	旋转工作流量	40~60 lpm
Unload Weight	卸载重量	8000 kg
Suitable Carrier	适配挖机	25-35 t

Professional manufacturer Professional choice

VIBRATION 震动夯

Flow control valve and overflow valve in conjunction, can adjust the flow within the appropriate flow range to ensure the speed of strike, can be suitable for different flow of digger.

流量调节阀与溢流阀配合，可在适当的流量区间内调节流量，保证打击速度，可适配不同流量的挖机。

Direct one-way valve, one-way unloading of the pump body pressure to ensure the normal operation of the motor.

直通单向阀，单向卸载马达泵体压力，保证马达正常工作。

Imported motor improves the service life and stability of power box body.

采用进口马达提高了动力箱体的使用寿命和稳定性。

Imported motor improves the service life and stability of power box body.

采用高弹性橡胶减震胶块，弹性好，减少挖机共振，增加设备使用寿命。

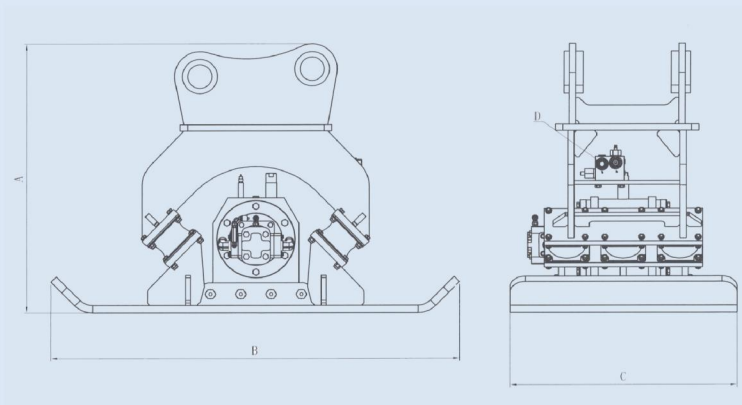


High strength vibration plate to ensure the service life of vibration compactor.

高强度振动板，保证震动夯的使用寿命。

Professional manufacturer Professional choice

VIBRATION 震动夯



FVC02

Total Weight	重量	192 kg
Working Pressure	工作压力	40~100 bar
Punch	打击力	25 KN
Working Flow	工作流量	30~50 lpm
Vibration frequency	振动频次	2000 Vpm(max)
Suitable Carrier	适配挖机	1-3 t

FVC03

Total Weight	重量	460 kg
Working Pressure	工作压力	80~120 bar
Punch	打击力	35 KN
Working Flow	工作流量	50~70 lpm
Vibration frequency	振动频次	2000 Vpm(max)
Suitable Carrier	适配挖机	4-6 t

FVC04

Total Weight	重量	550 kg
Working Pressure	工作压力	90~130 bar
Punch	打击力	40 KN
Working Flow	工作流量	60~80 lpm
Vibration frequency	振动频次	2000 Vpm(max)
Suitable Carrier	适配挖机	7-10 t

FVC06

Total Weight	重量	870 kg
Working Pressure	工作压力	100~140 bar
Punch	打击力	80 KN
Working Flow	工作流量	80~120 lpm
Vibration frequency	振动频次	2000 Vpm(max)
Suitable Carrier	适配挖机	11-16 t

FVC08

Total Weight	重量	1180 kg
Working Pressure	工作压力	150~180 bar
Punch	打击力	150 KN
Working Flow	工作流量	100~170 lpm
Vibration frequency	振动频次	2000 Vpm(max)
Suitable Carrier	适配挖机	17-23 t

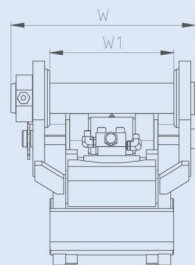
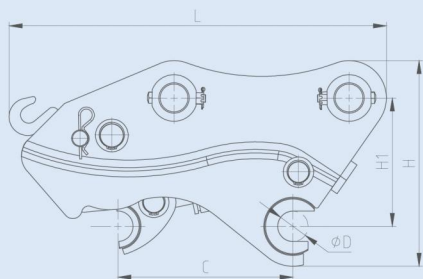
FVC10

Total Weight	重量	1300 kg
Working Pressure	工作压力	150~180 bar
Punch	打击力	160 KN
Working Flow	工作流量	120~210 lpm
Vibration frequency	振动频次	2000 Vpm(max)
Suitable Carrier	适配挖机	24-35 t

TYPE	FVC02	FVC03	FVC04	FVC06	FVC08	FVC10
A	617	780	780	942	1076	1076
B	760	1135	1135	1246	1620	1620
C	420	550	550	750	900	900
D	PF1/2"	PF1/2"	PF1/2"	PF3/4"	PF1"	PF1"

Professional manufacturer Professional choice

QUICK COUPLER 快速连接器



		FQC02	FQC03	FQC04
Total length L	总长度L	180-280 mm	400-450 mm	550-590 mm
Total height H	总高度H	190 mm	270 mm	310 mm
Total width W	总宽度W	150-200 mm	210-250 mm	240-310 mm
Centre distance of the axle C	销轴中心距C	85-180 mm	170-245 mm	245-300 mm
Arm Open W1	小臂开档W1	90-120 mm	110-160 mm	150-230 mm
Axial diameter D	轴直径D	φ25-φ30 mm	φ30-φ40 mm	φ40-φ50 mm
Distance between upper and lower axes H1	上下轴间距离H1	120 mm	170 mm	210 mm
Use pressure	使用压力	30-150 Kg/cm ²	30-150 Kg/cm ²	30-150 Kg/cm ²
Necessary traffic	必要流量	10-30 L/min	10-30 L/min	10-30 L/min
Suitable Carrier	适配挖机	1-3 ton	3-6 ton	6-8 ton

		FQC05	FQC06	FQC08
Total length L	总长度L	610-650 mm	800-860 mm	1000-1050 mm
Total height H	总高度H	322 mm	426 mm	500 mm
Total width W	总宽度W	300-385 mm	360-420 mm	450-560 mm
Centre distance of the axle C	销轴中心距C	290-360 mm	350-420 mm	400-510 mm
Arm Open W1	小臂开档W1	220-280 mm	250-320 mm	300-390 mm
Axial diameter D	轴直径D	φ50-φ60 mm	φ60-φ70 mm	φ80-φ90 mm
Distance between upper and lower axes H1	上下轴间距离H1	220 mm	260 mm	295 mm
Use pressure	使用压力	30-150 Kg/cm ²	30-150 Kg/cm ²	30-200 Kg/cm ²
Necessary traffic	必要流量	10-30 L/min	10-30 L/min	10-30 L/min
Suitable Carrier	适配挖机	8-15 ton	15-18 ton	18-25 ton

		FQC09	FQC10	FQC12
Total length L	总长度L	1080-1150 mm	1150-1250 mm	1250-1350 mm
Total height H	总高度H	540 mm	560 mm	600 mm
Total width W	总宽度W	530-640 mm	580-650 mm	630-700 mm
Centre distance of the axle C	销轴中心距C	500-580 mm	570-600 mm	590-650 mm
Arm Open W1	小臂开档W1	350-420 mm	400-450 mm	450-500 mm
Axial diameter D	轴直径D	φ90-φ100 mm	φ100-φ110 mm	φ110-φ130 mm
Distance between upper and lower axes H1	上下轴间距离H1	325 mm	355 mm	385 mm
Use pressure	使用压力	30-200 Kg/cm ²	30-200 Kg/cm ²	30-200 Kg/cm ²
Necessary traffic	必要流量	10-30 L/min	10-30 L/min	10-30 L/min
Suitable Carrier	适配挖机	25-36 ton	36-45 ton	45-55 ton

EDT SERIES EXCAVATOR ATTACHMENT



ISO9001 . ISO14001 . BSOHSAS18001

Professional manufacturer Professional choice



Main gate of HQ



CNC machining centre



Painting line



Heat-treatment line



Vertical grinding machines



Spare parts warehouse



Plasma cutting line



Robot welding



Blasting line



Test bench



Packing



Delivery

EDDIEs' Mission

To Build a New World, Create a New Life!

